

Program Details

ARTICLE NUMBER

ggu-01-108

OPERATING SYSTEM

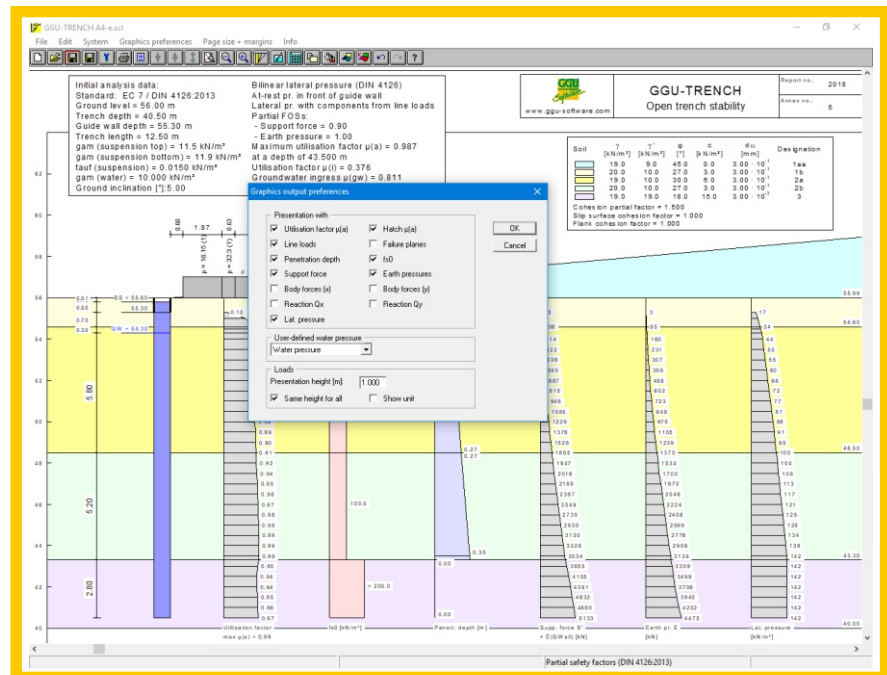
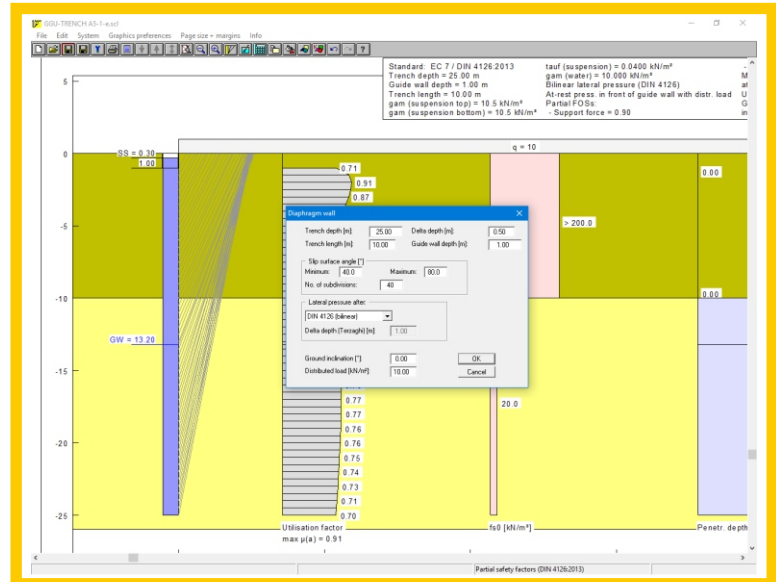
Windows 7/8/10

Description

GGU-TRENCH – Analysis of diaphragm wall stability to DIN 4126, DIN 4126-100 and EC 7/DIN 4126:2013.

Capabilities:

- Analysis using either the global safety factor concept (DIN 4126) or the partial safety factor concept (DIN 4126-100 and EC 7/DIN 4126:2013)
- Safety against groundwater ingress into the trench
- Safety against slippage of single grains or grain groups
- Safety against slip planes endangering the stability of the trench
- System input and visualisation using absolute heights
- Soil properties can be selected from an expandable database of common soils
- User-definable water pressures
- Variable design of output sheet including visualisation of Sum R , failure planes, penetration depth, support forces, earth pressures, etc.
- Output table in graphics format
- Adopted standard, program name and version can be included in the General legend
- The prefix 'EC 7' can be placed in front of the 'DIN 4126:2013' designation in the General legend
- Print or copy screen sections, e.g. for transfer to a word processor
- Integrated Mini-CAD system for additional annotation of graphics



PROGRAM GGU-TRENCH
GEOTECHNICAL ANALYSIS

